

Reflector luminaires for industrial applications

Extremely high efficiency, long life, LED luminaires ideal for industrial type applications. Narrow version for racking applications with light control to higher rack positions, and broad version for general area lighting. Superior distribution allows for greater spacing resulting in fewer, lower wattage versions than comparable T5 solution.

Applications: retail and distribution storage areas, factory areas including assembly areas / workshops, data centres.

- High quality control gear and LEDs designed to achieve 100,000 hour life expectancy
- SmartScan wireless technology removes the need for control cabling. Ideal for retro-fit



IP20

Up to 157.5 LL/CW

SMARTSCAN

LUXGUARD

Specification

Mounting	Surface	IP rating	IP20
Max presence detection height	8 m		

Lighting

Lumen output	3,840 lm - 9,115 lm	Efficacy	Up to 157.5 LL/CW
--------------	---------------------	----------	-------------------

Emergency data

Emergency lumen output	600 lm - 615 lm	Emergency type	Maintained
Emergency duration	3 hours	Battery specification	Nickel Metal Hydride (NiMH)

Power

LED power	22 W - 52 W	Circuit power	25 W - 59 W
-----------	-------------	---------------	-------------

LED characteristics

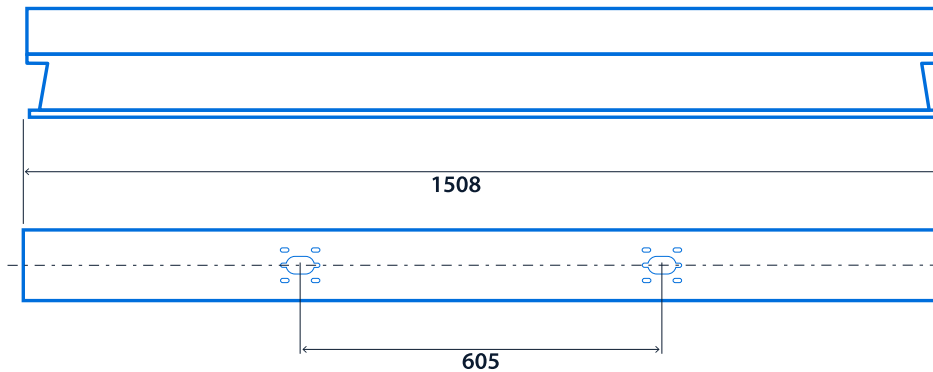
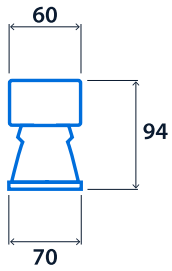
CRI	80+	Colour temperature	4000 K
Rated life (hours)	100 K - L70/B10		

Compliance

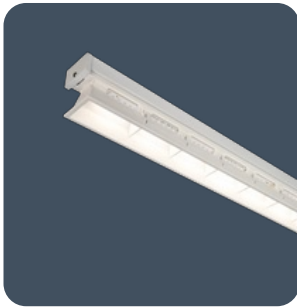
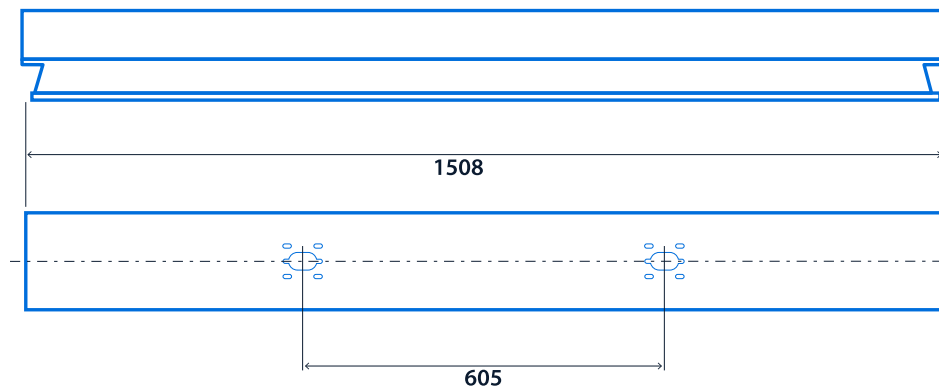
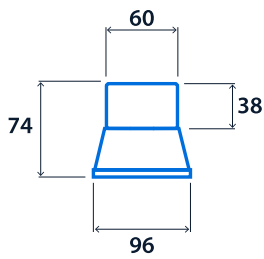
UKCA	Yes	CE	Yes
Energy efficiency class	This product contains a light source of energy efficiency class B		

Dimensions

Narrow Distribution



Broad Distribution



Click or scan here
View Kanby Max variants using
our online filtering tool



Information is correct as of 29 Dec 2024, however must not be interpreted as a guarantee of individual product performance and/or characteristics. We reserve the right to alter specifications and designs without prior notice.